

Cargo Security Solutions

- T-Series (Truck)
- R-Series (Rail)
- I-Series (Intermodal)

Security seals

- Rail
- Air
- Land (Truck)
- Sea

T-SERIES OVERVIEW

Designed in conjunction with industry security leaders, the War-Lok t-Series provides the highest level of deterrence to cargo and full container thefts in the trucking industry. And with 260 million key combinations possible and the ability to master key 20,000 different locks, War-Lok is the most effective—and convenient—lock yet.

All War-Lok internal locking cores are designed with a flat-keyed locking system. Each component of this high security disc type cylinder has been designed to withstand the harsh environments of the transportation industry. All components are made of chrome plated hardened steel, brass or stainless steel. The War-Lok is pick resistant, drill resistant, and key duplication is virtually impossible.



The TL-10 is a cast steel barrier box with a reusable, removable, keyed locking device that fits securely over the hasp of most trailers with swing-out doors. Once in place, the locking mechanism of the TL-10 and the trailer hasp are completely protected. A key opens and closes the TL-10. For fleets, the TL-10 can be keyed all different, all alike or master keyed. The War-Lok TL-10 is a cost-effective solution. Not to mention, simple, robust and reusable. The TL-10 comes standard in powder coated silver for color.



The TKP-10 is a highly effective king pin lock designed for dropped trailers. The conical shaped lock is lighter than most high-end king pin locks and wide enough to deflect the fifth wheel plate of a would-be thief tractor. The TKP-10 comes standard in powder silver for color.



When combined with any War-Lok product, the TH-10 hasp plate provides the highest level of deterrence to cargo theft. The TH-10 takes the current hasp, door handle rivet and locking bars out of the equation—removing all vulnerabilities a potential thief could attack.



Constructed of high impact aluminum steel, the TAB-10 truck air brake lock protects idling trucks from theft by completely encasing the air valves. Because this lock is not a permanent attachment, it can be re-used from one cab to another. The TAB-10 has the industry proven War-Lok internal locking core system and comes standard in powder coated red for color.



Composed of cast aluminum, the TGH-10 glad hand lock protects a trailer's brake system hoses from being connected to the trailer. It also has extra flange for additional protection of the 2-plate mounting bolts associated with the air hose connection. The TGH-10 comes standard in powder coated red for color.



The War-Lok padlock series can be keyed alike, keyed the same with our other products or keyed individually with over 260 million keying combinations. The TPL-8033 is made of standard steel and the TPL-8709 is constructed of stainless steel, making this lock almost impossible to bust with bolt cutters. All War-Lok Padlocks are guaranteed for five years.

The TSK-10 is a complete trailer security solution containing the TL-10, TKP-10 and customized detection seal.



For a complete tractor/trailer security solution, the TSK-50 comes equipped with a TL-10, TKP- 10, TAB-10, TGH-10 and the TPL-8033 Padlock in a convenient carrying case. All locks can be keyed alike



I-SERIES OVERVIEW

Designed in conjunction with industry security leaders, the War-Lok **i-Series** provides the highest level of deterrence to cargo and full container thefts in the intermodal and marine industries.



A two-part seal system, the IP-10 locking pin secures the hasp and the IB-10 cast iron barrier protects the pin. Each locking pin is individually numbered and bar-coded for easy tracking and tracing. With its easy to use design and completely reusable barrier box, the cost of the IP-10/IB-10 is comparable to a regular disposable bolt seal. But much more effective. The IB-10 fits a majority of intermodal container hasps and comes standard in powder coated silver for color.



The IP-10 and IB-10 are easily installed by hand, but only the IRT-10 can remove the pin once locked in place. We lease this tool to our customers through a pre-determined contract basis only.



Similar to the IP-10/IB-10, the IR-20 security system consists of a hardened steel lock pin that secures the hasp and a barrier box that protects the pin. It also incorporates a keyed high security lock enabling both the pin and housing barrier box to be reused, reducing overall costs. The IR-20 fits a majority of intermodal container hasps.

War-Lok IR-20 EXAMPLE:

Retailers having theft issues from suppliers. This environment is ideal for the War-Lok IR-20, due to the simplicity of how this traffic is moved. A majority of the time the supplier has one or a couple of Distribution Centers (DC(s)) that provide product to the retailer's main DC or cross docks. Since the move involves only a few parties a keyed environment can work perfectly. The War-Lok IR-20 is applied at origin DC and removed at destination DC. The key remains in the hands of the supplier and retailer, not in the carrier's hand. Due to effectiveness of the lock design it provides a true deterrent to thieves.

R-Series Overview

Designed specifically for the rail industry, the War-Lok **r-Series** prevents breeches in a number of boxcar types,



The War-Lok RAP-10 and RAB-10 are a two-part seal system consisting of a locking pin, RAP-10 and a cast iron barrier box, RAB-10 that fits a majority of auto box car transporters. The pin secures the hasp and the barrier box protects the pin. With its easy to use design and reusable barrier box, the RAP-10 and RAB-10 are very cost effective. The ongoing cost of using the RAP-10 is comparable to that of a regular disposable bolt seal.



A two-part seal system designed for standard rail boxcars, the RBP-10 can accommodate multiple sized rail boxcar containers. With a proprietary sleeve that is easily removed to make the seal thinner, the RBP-10 can also accommodate a number of boxcar rotary hasps. Each locking pin is individually numbered and bar-coded for easy tracking and tracing.



The RBP-10 is installed by hand, but only the RRT-10 can remove the pin once it is locked. We lease this tool to our customers through a predetermined contract basis only.

Security Seals

Transportation

Sea



[Klicker](#)

[iKlick](#)

[Cable Locks](#)

[Mega Lock](#)

[Mega Cable Locks](#)

[Domino seal](#)

[Simulock seal](#)

[Arrow seal](#)

[Fleetlock seal](#)

Rail



[Cable Locks](#)

[Domino seal](#)

[Simulock seal](#)

[Arrow seal](#)

[Fleetlock](#)

[Pull Tripletight seals](#)

Land



[Klicker](#)

[iKlick](#)

[Cable Locks](#)

[Mega Lock](#)

[Mega Cable Locks](#)

[Cable](#)

[Breakaways](#)

[Domino seal](#)

[Pull Tripletight seals](#)

[Simulock seal](#)

[Arrow seal](#)

[Fleetlock](#)

Air



Cargo:

[Cable Locks](#)

[Domino seal](#)

[Pull Tripletight seals](#)

Inflight:

[Pull Tripletight seal 5" \(Special\)](#)

[Fast seals](#)

[Talisman Padlock](#)

Now offering the new generation of seals.



Fleetlock

Low-cost plastic ring seal

Material: Food grade Polypropylene

Length: 10"

Pull strength: 42 lbs

Removal by hand – no tools required



Simulock

Uniquely tamper evident ring seal

Material: Food grade Polypropylene

Length: 8.5"

Pull strength: 77 lbs

Removal by hand – no tools required

Purpose: The Fleetlock and the Simulock are both ideal for trailers, containers, ULDs, warehouses, roll cages etc. The choice between the two seals depends on the level of security needed. While the Fleetlock can be compared to other ring seals on the market, the Simulock provides much higher tamper evidence and is therefore recommended for applications where unnoticed entrance, pilferage or tampering must be avoided.



Triple Tight Seal

Unique triple-locking pulltight seal

Material: Food grade Polypropylene

Length: 5", 8", 10"

Pull strength: 66 lbs

Removal by hand – no tools required

Purpose: The TTSPs are probably the most tamper evident pulltight seals around. They are ideal for sealing of tank trucks, bags and sacks, metal boxes, tote boxes and some ULDs.



Domino

The (r)evolution of the metal strap seal

Material: Tin plated mild steel and PP

Length: 8.5" x 0.35"

Pull strength: 200 lbs

Removal by cutter

Purpose: The most tamper evident metal strap seal is ideal to use on trailers, rail cars, containers, ULDs

Indicative Seal according to ISO 17712



Klicker

Strength and tamper evidence in 1 seal

Material: Steel and high-impact ABS

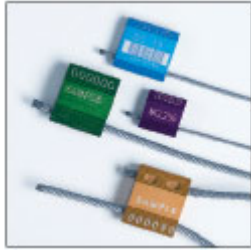
Length: 3/8" x 1" (locking length)

Pull strength: 2890 lbs

Removal by bolt cutter

Purpose: Widely used for containers and trailers domestically or for international shipments

High Security Seal according to ISO 17712 Comply with the FAST program



Cable Lock

Tamper evident high security seals

Material: Aluminium and steel wire

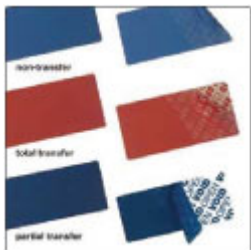
Length: 1/10", 1/8" or 3/16" x 14"

Pull strength: 1290 lbs, 2600 lbs and 2835 lbs depending on wire size

Removal by cable cutter

Purpose: Self-locking cable seals are great for rail cars, tank trucks, trailers and containers. ULDs, calibrators etc.

1/8" and 3/16" are High Security Seals Comply with the FAST program



TE Labels

Tamper evident self-adhesive security seals

Material: Polyester and Acrylic

Non-Transfer (NT) or Partial Transfer (PT) triggering.

Resistance: Resistant to heat and freeze attacks. The NT labels do not leave residue behind when they are removed. The security message triggers inside the NT labels. The PT labels on the other hand leave some residue on the surface they are removed from. The NT labels are ideal on smooth surfaces and on applications that are sealed multiple times.



TE Tapes

Tamper evident security tapes

Material: Polyester with Silicon coating and Acrylic

Total Transfer (TT) trigger system.

Resistance: Resistant to heat and freeze attacks. The Total Transfer (TT) tapes leave all the residue behind on the application if the tape is removed. TT tapes are ideal for sealing of carton boxes and other non-reusable boxes and packages to deter and detect tampering and pilferage.