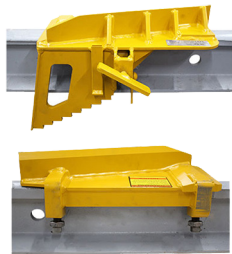


ALL PRODUCTS ARE AVAILABLE AT DAVANAC AND MORE



08-9230 / 08-9240

DERAIL PORTABLE, LOW PROFILE, 80-141-LB.
RAIL, PD-6L, L.H. / PD-6R, R.H.

- Low-profile portable derails.
- Will derail all rolling stock including mainline locomotives when installed and used correctly.
- Fabricated from high-strength steel and incorporate a low-profile derail design that lowers their height above the railhead.
- Right and left available.



08-9860 / 08-9090

CART, TOOL & SUPPLY,
STEEL BODY, 8" OR 5"
ALUMINUM WHEELS,

- Steel Carts that weigh less, and supports a 5,000-pound load.
- New Taller Handle.
- Larger Deck Area.
- Optional, Add-on Braking Systems Now Available.
- Steel-perforated Deck Area.
- Parking Brakes on Both Ends.
- Easy Two-direction Travel.



08-9010 / 08-6261

DERAIL SIGN, RED OR BLUE,
DOUBLE SIDED

- Highly Visible
- Manufactured with Engineer Grade Prismatic (EGP) Reflective Sheeting
- Reflects Light Back to the Source
- Will Never Rust or Fade
- Securely Mounts to All Nolan Signal Flag Staffs



08-9850

LIGHT, FLASHING, RED LED,
EASILY ATTACHES TO STAFF

- LED lights
- Solar switch control
- Uses two 6-volt batteries (not included)
- Easily attaches to staff
- Weighs 2 lbs (1 kg)
- Available in different colours



08-8590

PORTABLE DERAIL STAFF -
LOW PROFILE

- Sharp pointed staff for rapid setting
- Can be used with any signal flag
- Portable use
- Flashing lights easily attach to staff
- Weighs 6 lbs (2.7 kgs)

Place your order today!